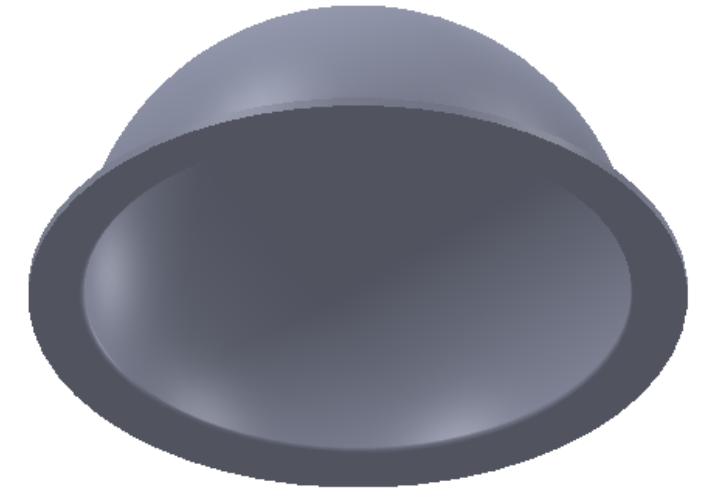
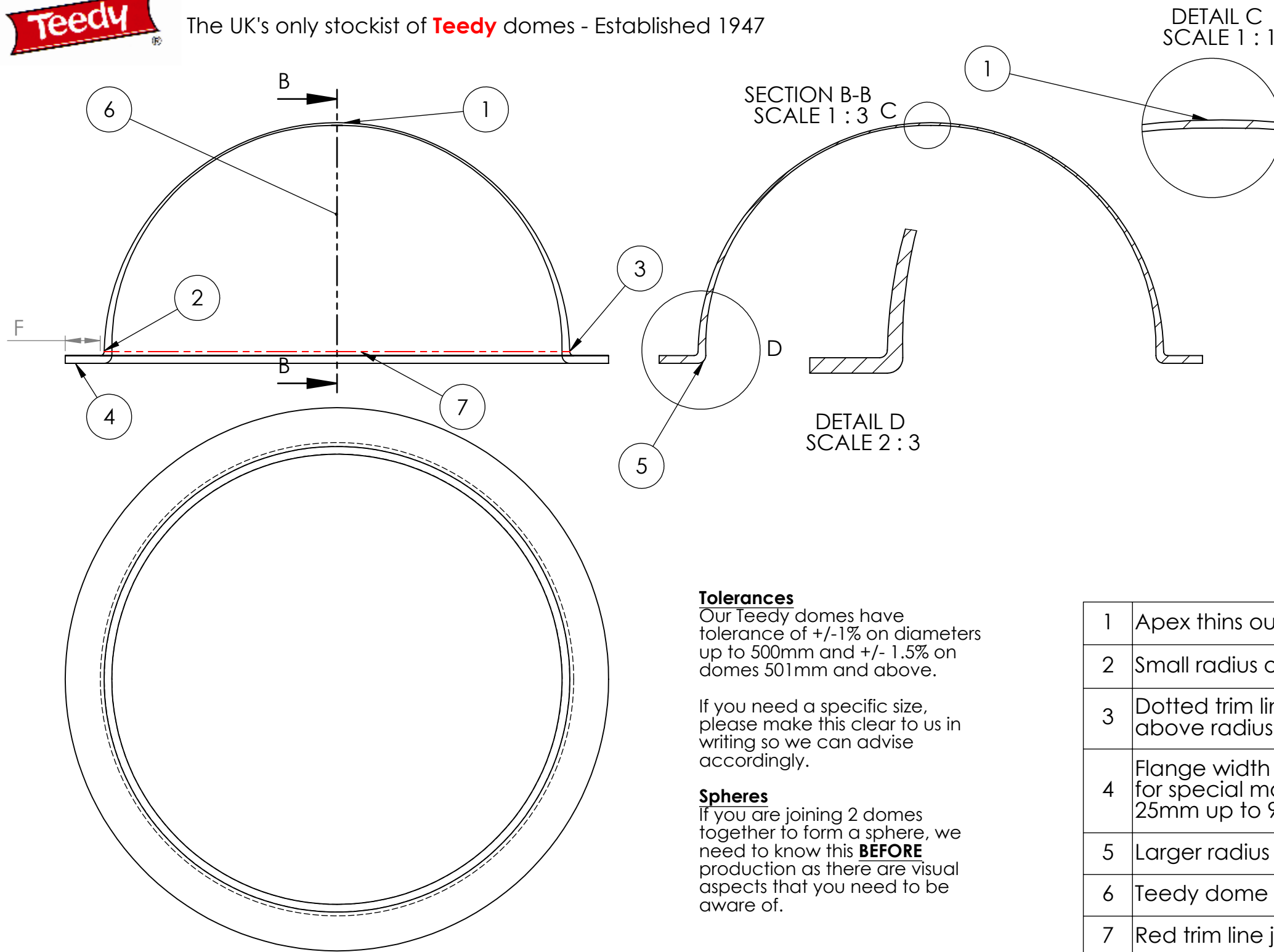




The UK's only stockist of **Teedy** domes - Established 1947

COPYRIGHT OF TALBOT DESIGNS LTD  
NOT TO BE REPRODUCED IN PART OF FULL  
WITHOUT OUR PERMISSION



**Tolerances**

Our Teedy domes have tolerance of +/-1% on diameters up to 500mm and +/- 1.5% on domes 501mm and above.

If you need a specific size, please make this clear to us in writing so we can advise accordingly.

**Spheres**

If you are joining 2 domes together to form a sphere, we need to know this **BEFORE** production as there are visual aspects that you need to be aware of.

1	Apex thins out by 2/3rds of material starting thickness
2	Small radius on flange where it meets the dome
3	Dotted trim line for flangeless domes just above radius as detailed on item 2 above
4	Flange width dependent on stock size or specific dimensions for special make domes. Generally 20mm up to 450mm dia, 25mm up to 900mm dia and 40mm for all larger than 900mm
5	Larger radius on internal lip where it meets the flange
6	Teedy dome height is measured to red trim line
7	Red trim line just above radius on flange for flangeless domes
8	Clamp marks may be present on flanges due to the manufacturing process

Customer name	Date
---------------	------

7	Outside diameter	
6	Height	
4	Flange Width	
1&3	Thickness	
	Holes	
	Material	

UNLESS OTHERWISE SPECIFIED: DIMENSIONS ARE IN MILLIMETERS		FINISH:		DEBUR AND BREAK SHARP EDGES		DO NOT SCALE DRAWING		REVISION	
SURFACE FINISH:									
TOLERANCES:									
LINEAR:									
ANGULAR:									
	NAME	SIGNATURE	DATE			TITLE:			
DRAWN	RWOOLFF		1/1/2015			Talbot Designs Ltd			
CHK'D						talbotdesigns.co.uk			
APPV'D						020 8346 8515			
MFG						DWG NO.		Teedy dome	
Q.A					MATERIAL:			A3	
					ACRYLIC				
					WEIGHT:	SCALE:1:5		SHEET 1 OF 1	